

The background features diagonal stripes in a rainbow color palette (red, orange, yellow, green, blue, purple) running from the top-left to the bottom-right. The stripes are semi-transparent and set against a light, textured background.

**Ewsca**<sup>®</sup>  
— Cashmere —

**READY TO SHIP**

**Baby  
Cashmere  
Collection**

[www.ewsca-cashmere.com](http://www.ewsca-cashmere.com)

# Ewscas<sup>®</sup>

— Cashmere —







**EWSCA**  
Cashmere



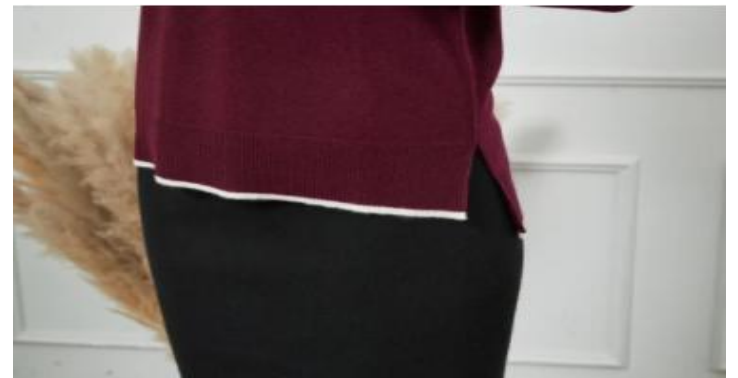
























## Size guides

# Ewsca<sup>®</sup>

## Cashmere

CENTIMETER

Centimeter	Tolerance+/-	XS	S	M	L	XL
Length	1	68.58	69.85	71.12	72.39	73.66
Chest	1	88.90	93.98	99.06	104.14	109.22
Hip	1	93.98	99.06	104.14	109.22	114.30
Across Shoulder	0.5	35.56	36.83	38.10	39.37	40.64
Sleeve length	0.5	76.20	77.47	78.74	80.01	81.28
Sleeve width	0.3	13.97	15.24	16.51	17.78	19.05

## Size guides

INCHES

Inches	Tolerance+/-	XS	S	M	L	XL
Length	0.4	27	27 1/2	28	28 1/2	29
Chest	0.4	35.0	37.0	39.0	41.0	43.0
Hip	0.4	37.0	39.0	41.0	43.0	45.0
Across Shoulder	0.2	14.0	14.5	15.0	15.5	16.0
Sleeve length	0.2	30	30 1/2	31	31 1/2	32
Sleeve width	0.1	5.5	6.0	6.5	7.0	7.5



Applicant : Hebei Shenglai Cashmere Productcs Co., Ltd.  
Paifang Street Gexianzhuang Qinghe County Hebei Province  
China  
Attn : Andy

Date : Sep 01, 2021

Sample Description As Declared :

No. Of Sample : One  
Fibre Content : 100%Baby Cashmere  
Material : Fibers  
End Uses : -  
Colour : White  
Style No. : -  
Order No./PO No. : -  
Buyer's Name : -

Applicant's Provided Care Instruction/Label : -

Date Received/Date Test Started : Aug 27, 2021

Tests Conducted:

As Requested By The Applicant, For Details Refer To Attached Page(S)

Tests Conducted:

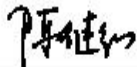
1. Fiber Diameter (ASTM D2130-13):

Fiber Diameter : 14.30µm  
The Number Of Measurements : 600  
The Standard Deviation Of Fiber Diameters : 2.97µm  
The Coefficient Of Variation Of Fiber Diameters : 20.75%  
95% Confidence Limits For The Lot Mean : ±0.24µm

Remark : Test Condition : 21+/-1°C And 65+/-2% Relative Humidity.

*This report is made solely on the basis of your instructions and/or information and materials supplied by you. It is not intended to be a recommendation for any particular course of action. Intertek does not accept a duty of care or any other responsibility to any person other than the Client in respect of this report and only accepts liability to the Client insofar as is expressly contained in the terms and conditions governing Intertek's provision of services to you. Intertek makes no warranties or representations either express or implied with respect to this report save as provided for in those terms and conditions. We have aimed to conduct the Review on a diligent and careful basis and we do not accept any liability to you for any loss arising out of or in connection with this report, in contract, tort, by statute or otherwise, except in the event of our gross negligence or willful misconduct.*

Authorized By :  
For Intertek Consumer Goods-  
Beijing Cashmere Lab



Jihong Chen  
Ccmi Recognized Analyst  
Technical Director Of Cashmere Testing  
In Intertek Group